

Product guide

Step by Step



How to use

Light rust staining and streaking effects

I will show one of the ways I create light rust staining and streaking effects. I will use the turret of my Russian built 2S3 to show some of the layered staining and streaking - for a start I am beginning with lighter rust.

By Scratchmod



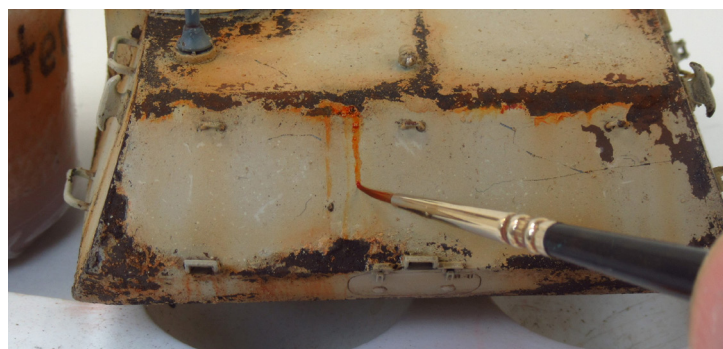
- 1 The Light Rust Wash 76.505 (of the Model Wash series) was sprayed over and around the chipped areas and then again as streaks. I used low air pressure of around 10psi and sprayed lightly. It is important to build up the staining and streaking in light coats.



- 2 With a fine tipped brush I applied Model Air 71.130 Orange Rust on the base color around the darker rust chipping and then started to create streaks from those areas.



- 3 Before the stain and streaking dried I used a flat brush dampened with water to blend this bright orange color applied around the chipping. The flat brush is wiped clean/dry and the blending of the streaks is done with a vertical motion.



- 4 The next color I used is the 76.505 Light Rust Wash straight from the bottle, without thinning. Note that the previous staining and streaking has not been left to dry for a long period. I moved right on to the next color.



- 5 I let the 76.505 Light Rust Wash start to dry a minute or two. Being neat doesn't matter in these early streaking stages.



- 6 Using the slightly dampened flat brush again I started at the top of the streak and wiped down the streak to remove excess and to blend and fade the streaks.

Product guide

Step by Step

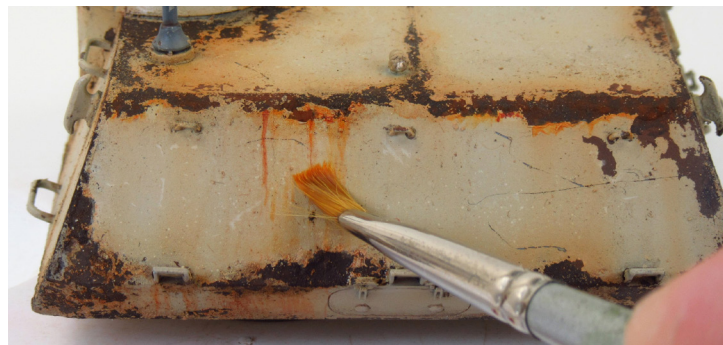


How to use

Light rust staining and streaking effects



7 After letting the first two streaking steps dry for 5-10 minutes, I could then start to add more streaks. Some streaks were applied in straight lines and some as squiggly snake-like lines.



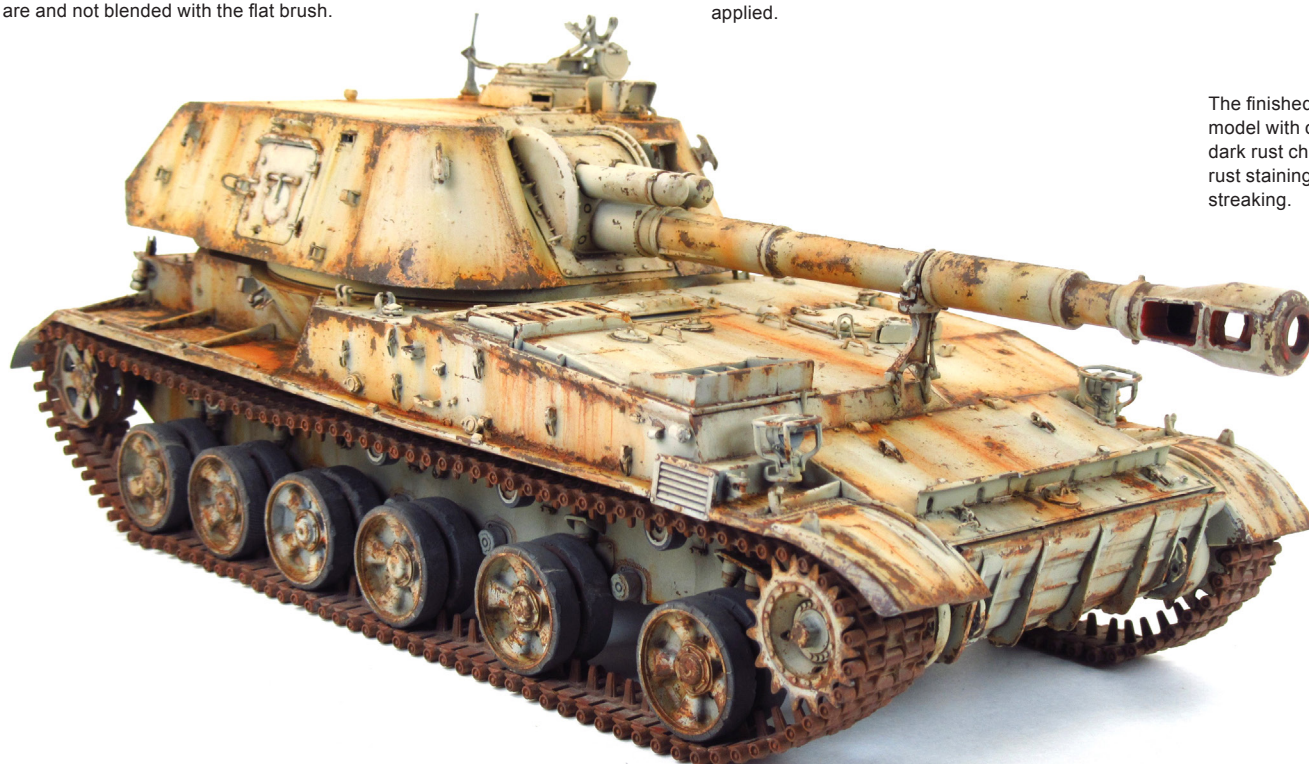
8 Again the flat brush was used for cleaning and blending. Take care to avoid that the paint surface is not too wet, because this would soften the underlying base paint and that might cause the paint to lift or chip.



9 I have repeated the previously described steps, using the same colors, to add more streaks. These final streaks were applied somewhat neater than before and with the use of a very fine-tipped brush, and the final streaks were left as they are and not blended with the flat brush.



10 The color 71.130 Orange Rust was applied in the same manner as before with the 76.505 Light Rust Wash. This aided in giving a more tonal variation, and in blending previously applied stains, as well as staining the streaks previously applied.



The finished model with old dark rust chipping, rust staining and streaking.