

Product guide

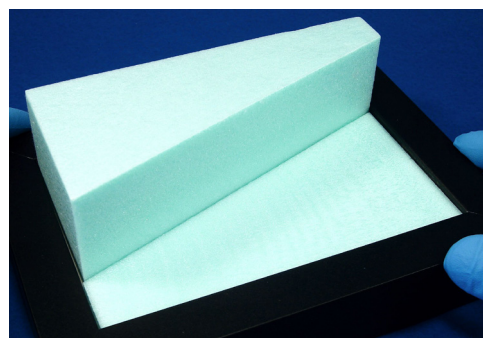
Step by Step



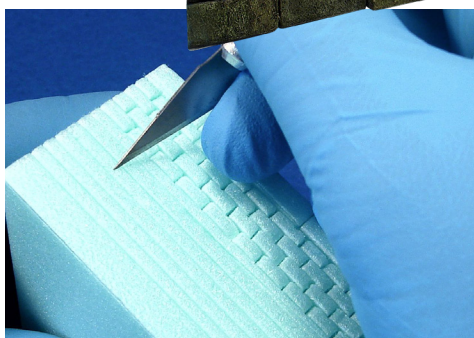
How to use

Painting and weathering a pier

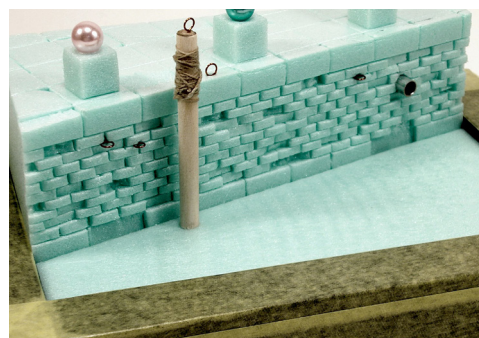
By José Brito



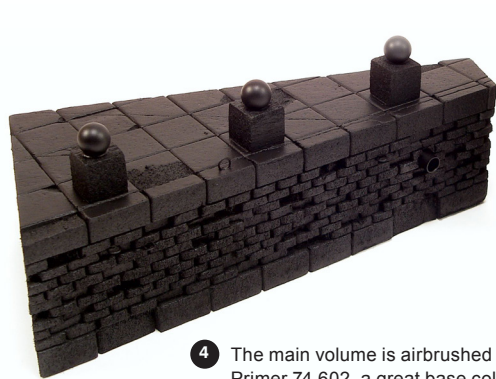
1 For this project we are using a picture frame as a base. The main volume of the river bank is fully scratched in heat isolation foam. This foam is light weight, inexpensive and easy to work with, as well as ideal to for large volumes.



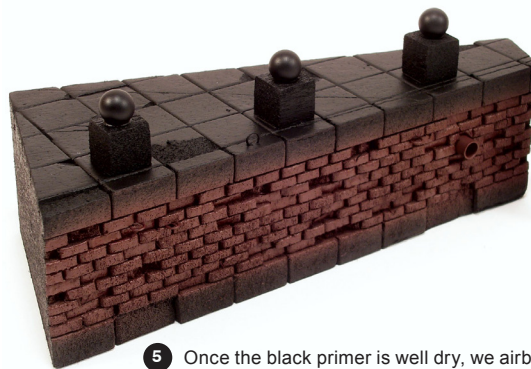
2 The wall under construction. All the bricks and stones are carved individually.



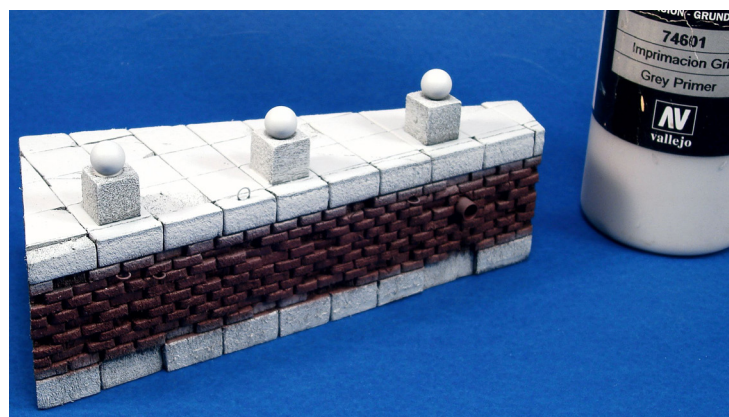
3 Next the main volume is ready for painting, but should first be tested to fit it into the base before the start of applying color and weathering.



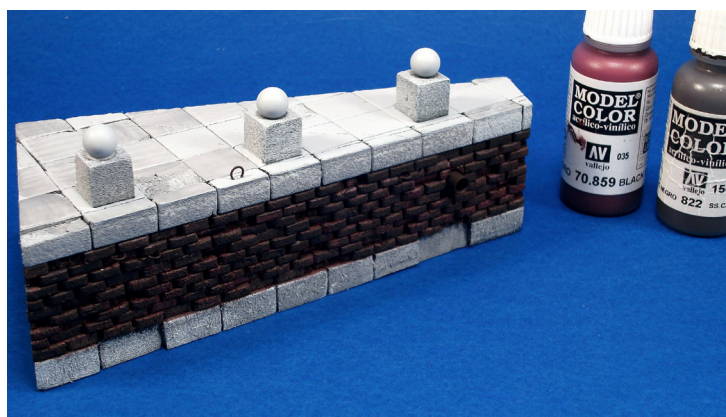
4 The main volume is airbrushed with Vallejo Black Surface Primer 74.602, a great base color which will add shadows into all the recessed parts.



5 Once the black primer is well dry, we airbrush the same piece with Vallejo Surface Primer 70.605 German Red Brown. This will be the base color for the brick wall.



6 The granite parts are now airbrushed with Vallejo Grey Surface Primer 74.601. This is a great base color for all the grey parts.



7 The bricks were brush-painted with Vallejo Model Color Ref. 70.859 Black Red and Ref. 70.822 SS Cam. Black Brown, both colors applied randomly and well thinned with the help of a medium size brush.

Product guide

Step by Step



How to use



- 8 The granite parts were brush painted with Vallejo Model Air, Ref. 71.046 Pale Grey Blue and 71.119 White Grey (RAL9002). These colors are applied well thinned and at random, with the help of a medium size brush. Small details are picked out with the help of a medium size round brush.



- 9 The parts near the water are weathered with Vallejo Model Wash 76.512 Dark Green, 76.519 Olive Green and 76.520 Dark Khaki Green. Those colors will represent the levels of tide variations on the wall. They must be applied in consecutive and well thinned layers.

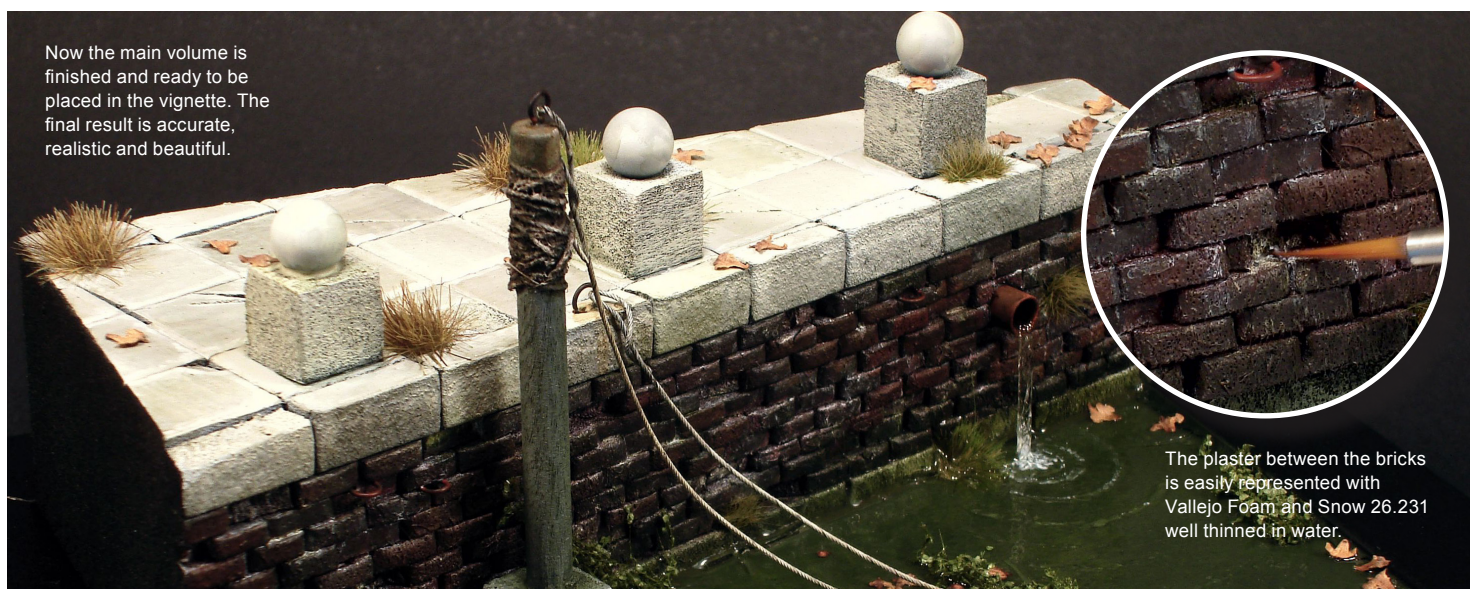


- 10 The granite parts are weathered with Vallejo Model Wash 76.515 Light Grey and Model Wash 76.524 Blue Grey.



- 11 The brick wall is weathered with Vallejo Model Wash 76.514 Dark Brown and Model Wash 76.523 European Dust. This will increase the shadows in the recessed parts and the high- lights in the raised areas.

Now the main volume is finished and ready to be placed in the vignette. The final result is accurate, realistic and beautiful.



The plaster between the bricks is easily represented with Vallejo Foam and Snow 26.231 well thinned in water.

Products used:

74602 Black Primer
70605 German Red Brown
74601 Grey Primer

70859 Black Red
70822 SS Cam. Black Brown
71046 Pale Grey Blue

71119 White Grey (RAL9002)
76512 Dark Green
76519 Olive Green

76520 Dark Khaki Green
76515 Light Grey
76524 Blue Grey

76514 Dark Brown
76523 European Dust
26231 Foam and Snow