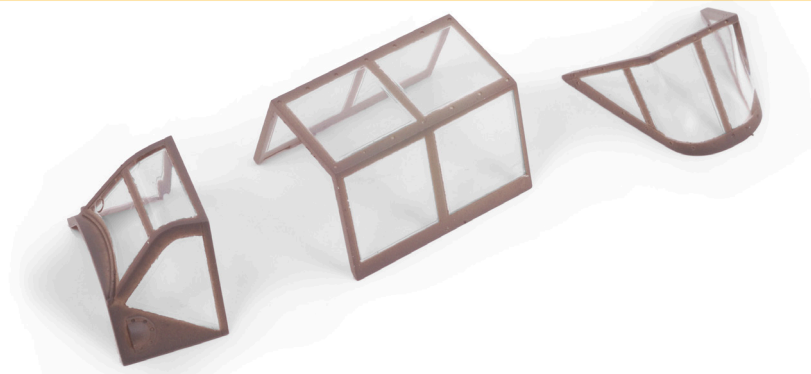


Tutorial

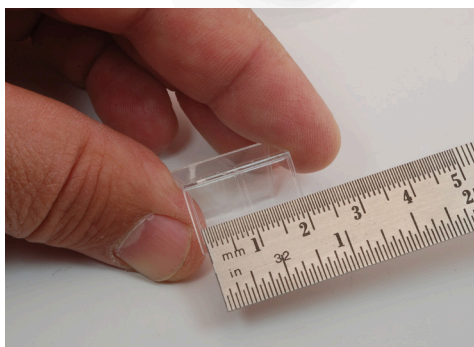
Masking aircraft cabins

Painting the structure of the glass parts of aircraft has always been a headache. Here is a simple guide to solve this problem.

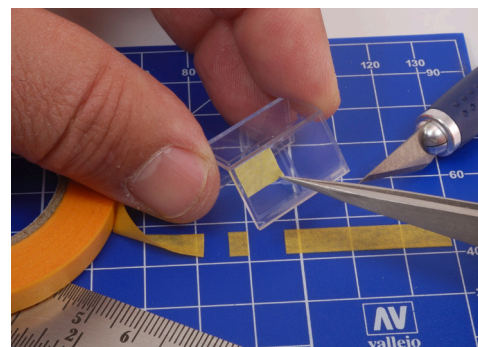
By PIEZA A PIEZA Modelling Workshop



1 The materials used are simple, Vallejo Liquid Mask 70.523 and Masking Tape, a fine honed cutter and tweezers.



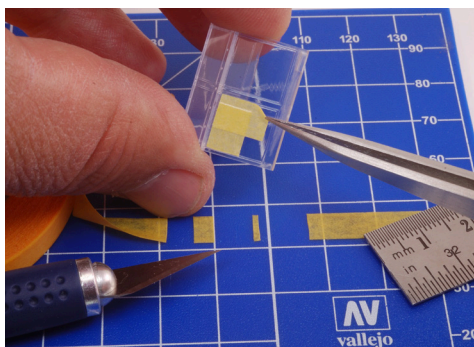
2 First the side of the window that we want to mask needs to be measured.



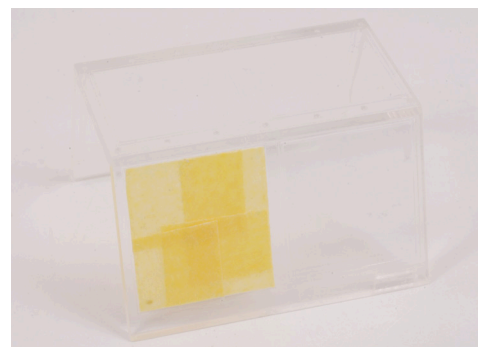
3 A piece of masking tape is cut slightly shorter than the size needed; for example: if 8mm are needed we subtract 1mm.



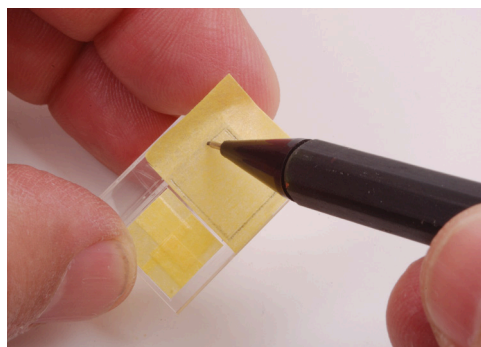
4 The same process is done for the other window.



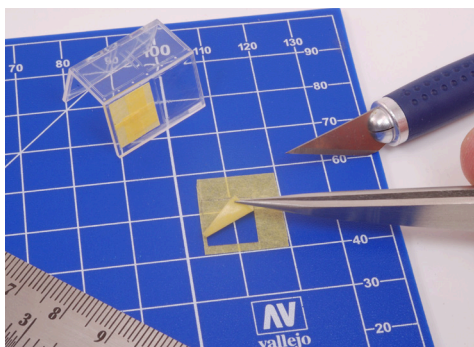
5 Again, a piece of masking tape is cut slightly shorter than the size needed. A cutting mat and a new blade in the cutter are essential to obtain a precise result.



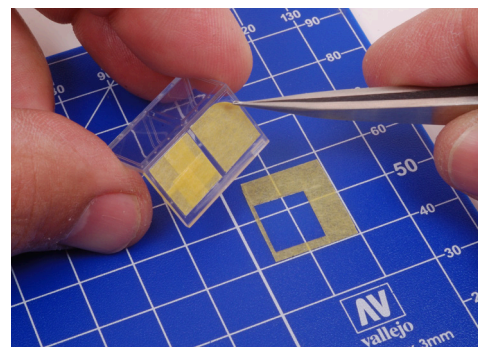
6 Overlapping 4 pieces of masking tape of the right measure ensures that the masked area is perfect.



7 Another method for this process, is placing a piece of masking tape wide enough to cover widely. Using a pencil, the outline of the window is drawn.



8 The masking tape is removed and precise cutting is done on the cutting mat. With the help of Vallejo Tweezers T12003 the masking tape is separated.



9 This method is quicker, but required a lot more precision and doesn't allow for errors when cutting. If the cut is too long or too short, the process will need to start again.

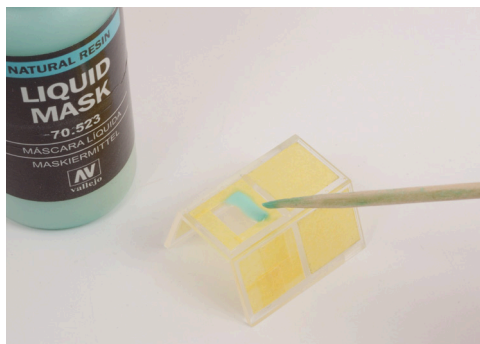
Product guide

Step by Step

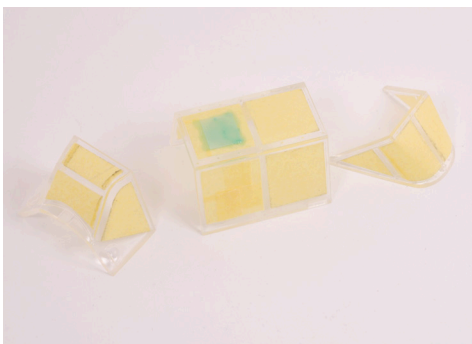


Tutorial

Masking aircraft cabins



- 10 The use of masking tape can be combined with Liquid Mask 70.523.



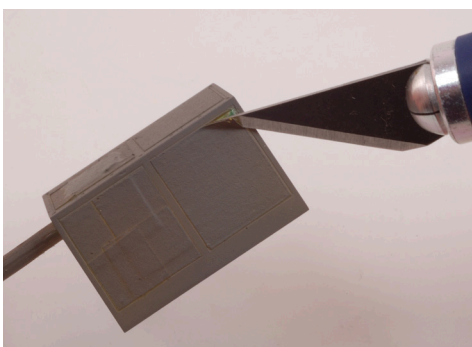
- 11 The chosen method to protect the windows will vary depending on the type of cabin.



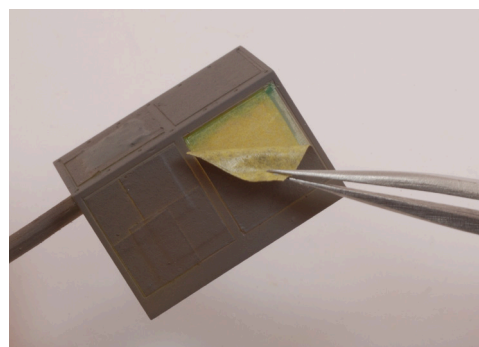
- 12 It is important to protect the interior area and, for that purpose, the combination of masking tape and Vallejo Liquid Mask is ideal.



- 13 Once all the windows have been covered, they piece is airbrushed with the desired color, in this case Grey Violet RLM75 71.259.

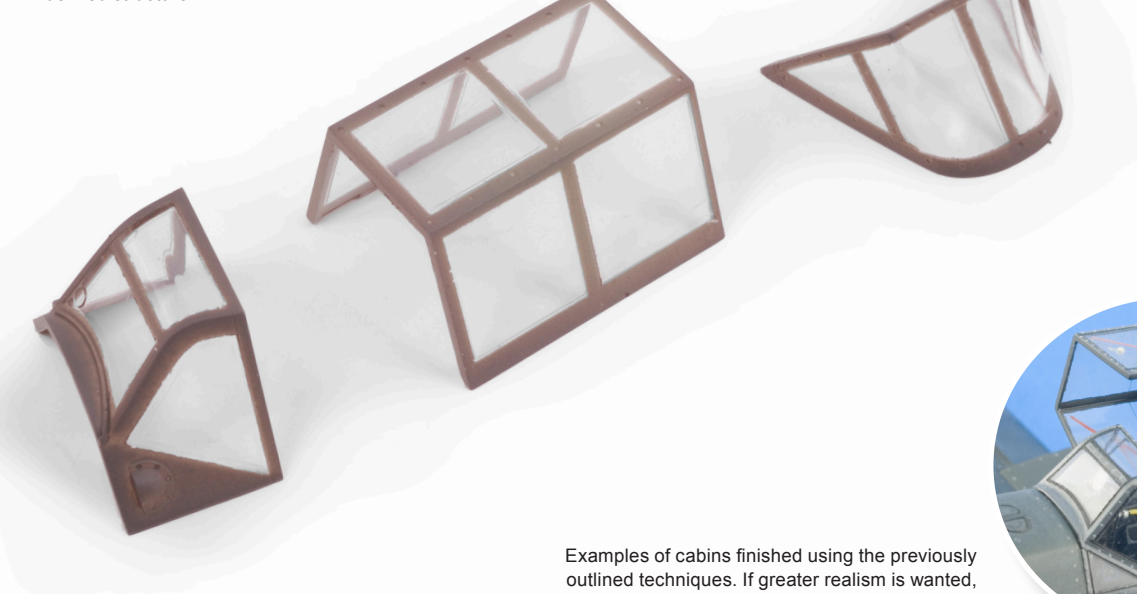


- 14 A sensible length of time is required to allow the color to dry prior to removing the masking tape. First, with the help of a cutter, a corner is detached.



- 15 Then, the whole masking tape is removed with the aid of precision tweezers.

- 16 The result is a neat and perfectly defined structure.



Examples of cabins finished using the previously outlined techniques. If greater realism is wanted, the internal part can be painted or even the rivets can be simulated... you set the limits.

