

Product guide

Step by Step



Tutorial

Rust & Chipping paint effects

In this tutorial we will show the use of the references included in the Rust and Chipping Effects set, to depict weathered paint effects and traces of rust, as well as the use of the Chipping Medium to represent the appearance of the layers and faded paint coats.

By Chema Cabrero



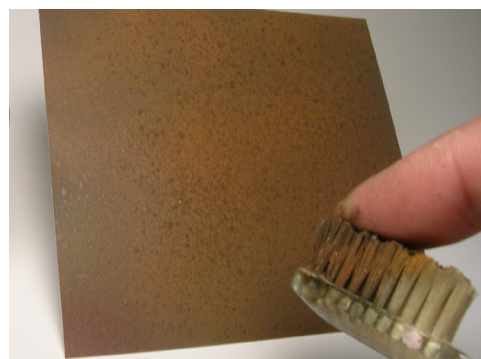
- 1 First the base color Orange Rust 71.130 is airbrushed as a primer to a uniform finish with a pressure of 12-15 psi or 1,5 kg.



- 2 After the primer dries, the next color, Dark Brown RLM61 71.042, is added in random areas to depict the bare metal.



- 3 The lighter rust colors from the set can be applied next, either directly sprayed on the surface or mixed amongst them for texture.



- 4 The typical rust texture of light and dark shades are projected on the surface using a toothbrush and Vallejo references Yellow Ochre 71.033 and Orange Rust 71.130.



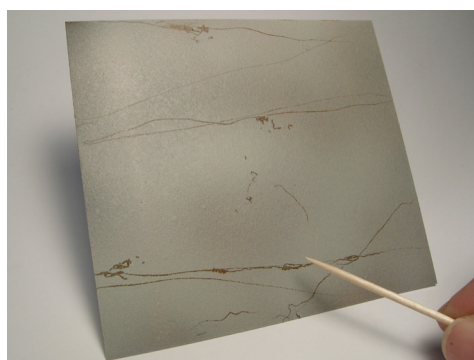
- 5 More streaking traces of rust can now be airbrushed with Yellow Ochre 71.033.



- 6 Now it is time to add a coat of Chipping Medium 73.214 by airbrush.



- 7 When the Chipping Medium has dried, the final coat of color is applied.



- 8 With a moistened toothpick some scratches are created on the surface, showing the previously applied rust color underneath. Some pictures of real textures can be a useful reference: it is important to avoid symmetrical finish.



- 9 The surface is moistened slightly to allow for easy removal of some of the paint and show the oxide underneath.

Product guide

Step by Step



Tutorial

Rust & Chipping paint effects



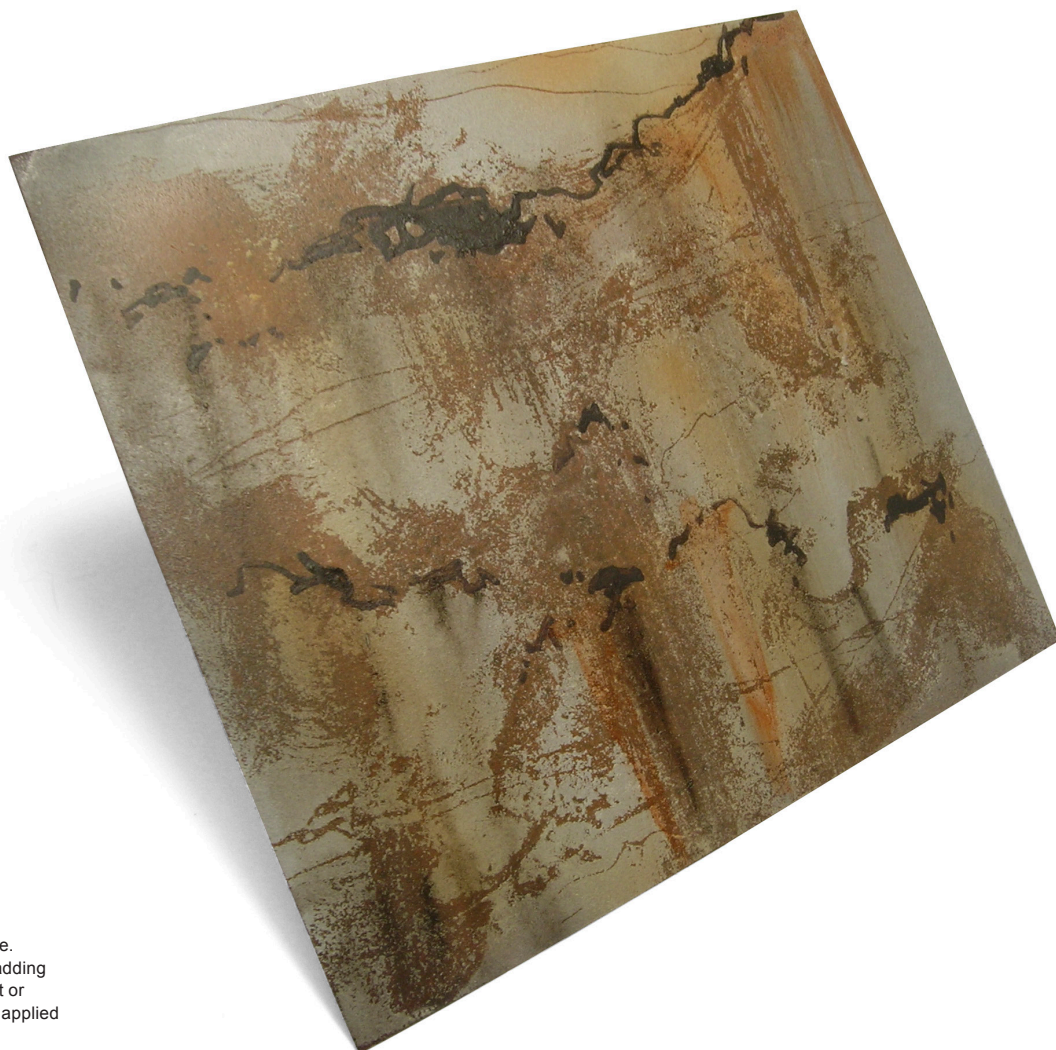
- 10 Other tones and tonal changes can be added for a more realistic finish, using pictures of real textures for reference.



- 11 Now it is time to play with a subtle faded finish, using the washes Dark Brown 76.514 and Rust 76.506 to blend over the first rust stains.



- 12 Again, it is important to remember that less is more... some drops of water, a drop or two of Retarder Medium 70.597 and a steady hand!



- 13 The surface is now finally done. We can bring greater variety adding pigments in dry form, and dust or some more orange rust tones applied by airbrush.

Tutorial

Rust & Chipping paint effects

Another example, showing a faded winter camo:



1 Over a Panther turret some chipped paint effects are created with the use of Vallejo Chipping Medium.



2 Several thin coats of faded White are applied.



3 Using a flat brush moistened with warm water the paint is removed in some areas, achieving an irregular chipped paint look.

